

D3024

High Speed Micro Centrifuge



Features

- Double cooling air design ensures fast cooling of the rotor and low energy consumption
- 3-layer sealed rotors ensure safe centrifugation
- Brushless motor drive, maintenance free
- Safety features include door interlock; excessive speed and temperature detection; automatic self-diagnostics
- Outstanding aluminum alloy rotors fully autoclavable at 121°C temperature and high pressure disinfection
- Five rotors are optional complete with 24 places 1.5/2.0mL tubes, 5.0mL, 0.2mL and 0.5mL tubes with adapters

Applications

Suitable for numerous biological, chemistry, clinical and research applications including molecular biology, clinical chemistry labs, wide variety of microbiology applications, such as DNA, RNA or protein isolation and many more.

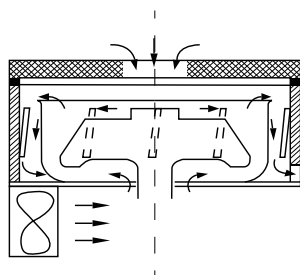


Brushless DC motor



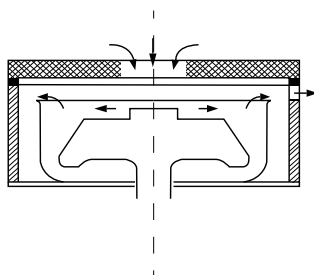
Wide range of rotors

Effective Ventilation System



Double cooling air design, enforcing air cooling from both the upper and lower side for the rotor.

Conventional design



Limited ventilation on the upper side of the rotor

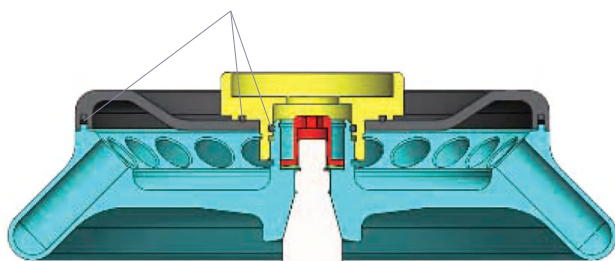


DLAB rotors are manufactured from military-industrial grade aluminum alloy with high mechanical strength for precise running and safety (excludes D2012 plus rotor)

- Every rotor can reach a maximum Speed of 15000rpm
- Rotors are seated on a tapered shaft, concentric and self-aligning, perfect to achieve running stability at high speeds
- D3024 & D1524R with three-layer sealed rotors/ anti- sample overflow prevents accidental leakage
- D3024 & D1524R rotors have passed MCA test according to IEC/EN61010-2-20, including mechanical safety and bio-safety tests
- Powerful cooling system minimizes rotor heating. D3024 rotors maintain at 10°C and D1524R rotors less than 8°C after running an hour

Seals within the aluminum alloy rotor

Three rubber seals fitted to achieve bio-safe condition



Rotor Features

Fully autoclavable

High strength aluminum alloy rotors are fully autoclavable, withstanding steam sterilizing at 121°C for 20 minutes

Three-layer seal

D3024 & D1524R rotors are designed to prevent sample leakage. Each and every rotor is hermetically sealed by three rubber seals.

Mechanical safety

DLAB centrifuges confirm to MCA standard IEC/EN61010-2-20, causing disruption by partially cutting and overloading rotor assembly, and guarantees that no part shall be detached to cause danger to person or the environment.

| Specifications | D3024 |
|---------------------------------|---|
| Max. Speed | 15000rpm(200-15000rpm), increment:10rpm |
| Max. RCF | 21380×g, increment:10×g |
| Speed Accuracy | ±20 rpm |
| Rotor Capacity | 1.5/2mL×24,0.2/0.5mL×36, PCR-8 strips×4,5mL×12,5mL×18 |
| Run Time | 30sec-99min/Continuous |
| Acceleration/Braking time [Sec] | 25s ↑ 25s ↓ |
| Motor | Brushless DC motor |
| Safety Devices | Dual door interlock, Over-speed detection, Automatic internal diagnosis |
| Power Requirements | Single-phase, AC200V-400V, 50Hz/60Hz, 5A, AC100V-120V, 50Hz/60Hz, 8A 200W |
| Noise Level | ≤64dB |
| Dimension[W×D×H] | 280×364×266mm |
| Weight | 12kg |
| Other functions | Speed/RCF switch; Short-time run function; sound-alert function |

Available rotors

AS24-2

Cat. No.19400069

for D3024 & D1524R

Max. speed: 15000rpm

Max. RCF: 21380×g

Rotor capacity:

2mL/1.5mL×24/0.2mL×24/0.5mL×24

Rotor material: Aluminum alloy

Biosealing: Yes

Available rotor adapters: A02P2,A05P2



AS18-5 (round bottom)

Cat. No.19400073

for D3024 & D1524R

Max. speed :15000rpm

Max. RCF:21380×g

Rotor capacity:5mL×18 (Round bottom)

Rotor material:Aluminum alloy

Biosealing:Yes



AS12-5V (cone bottom)

Cat. No.19400070

for D3024 & D1524R

Max. speed: 15000rpm

Max. RCF: 21380×g

Rotor capacity: 5mL×12(Cone bottom)

Rotor material: Aluminum alloy

Biosealing: Yes



Available adapters

A02P2

Cat. No.19500001

0.2mL rotor adapter

Used with A12-2, A12-2P, AS24-2 and

A24-2P rotors 24pcs/pk



AS36-05

Cat. No.19400071

for D3024 & D1524R

Max. speed: 15000rpm

Max. RCF: 21380×g

Rotor capacity: 0.5mL×36,0.2mL×36

Rotor material: Aluminum alloy

Biosealing: Yes

Available rotor adapters: A02P05



A05P2

Cat. No.19500002

0.5mL rotor adapter

Used with A12-2, A12-2P, AS24-2

and A24-2P rotors

24pcs/pk



AS4-PCR8

Cat. No.19400072

for D3024 & D1524R

Max. speed: 15000rpm

Max. RCF: 21380×g

Rotor capacity:0.2mL/PCR8×4

Rotor material: Aluminum alloy

Biosealing: Yes



A02P05

Cat. No.19500003

0.2mL rotor adapter

Used with AS36-05 rotor

36pcs/pk

